



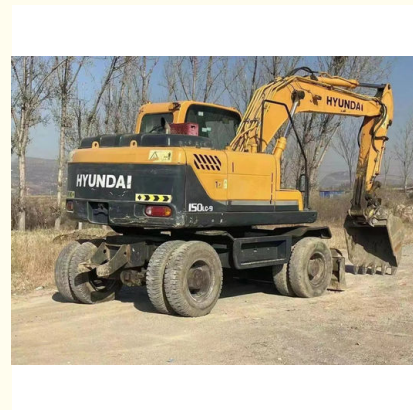
## Good Running Condition Used Wheel Excavator Hyundai 150-9 220LC-9s 210-9 215-7 60-7 300LC-9s

Our Product Introduction

for more products please visit us on [usedexcavator-equipment.com](http://usedexcavator-equipment.com)

### Basic Information

- Place of Origin: China
- Brand Name: HYUNDAI
- Certification: CE
- Model Number: HYUNDAI 150-9
- Minimum Order Quantity: 1
- Price: USD11000
- Packaging Details: Container or Flat Rack or Bulk Ship
- Delivery Time: 5-8 work days
- Payment Terms: T/T



### Product Specification

- Size: Medium-Sized
- Operation Weight: 6.5t
- Transport Package: Container Or Flat Rack Or Bulk Ship
- Trademark: HYUNDAI
- HS Code: 84295212
- Bucket Capacity: 1.0~1.5m<sup>3</sup>
- Power: 110kw
- Highlight: **Hyundai 150-9 220LC-9s Used Excavator , Good Running Condition Wheel Excavator , Hyundai Wheel Excavator**

## Product Description

### Basic Info.

Model NO.	HYUNDAI 150-9
Bucket Capacity	1.0~1.5m <sup>3</sup>
Size	Medium-Sized
Certification	ISO9001: 2000
Condition	Used
Hydraulic Pump	Hyundai
Operation Weight	6.5t
Power	110kw
Transport Package	Container or Flat Rack or Bulk Ship
Specification	Medium
Trademark	HYUNDAI
Origin	China
HS Code	84295212

### Product Description

### Product description

Used Crawler Excavator HYUNDAI 150-9  
Machine Runs and Works Great  
100% Work Ready  
Regularly maintained and serviced  
Low Hours Worked  
Year model is 90% New  
Good Engine Transmissions

Hydraulics Tracks

No Oil Leaking

Machine very Good and Clean

Excellent Working Condition

Located in Shanghai City China

Hot!!! Good Running Condition Used Wheel Excavator Hyundai 150-9 220LC-9s 210-9 215-7 60-7 300LC-9s

### Packaging & Shipping

Container or Flat Rack or Bulk Ship

### Our Services

- 1.Pick up customer from the Airport
- 2.Help our customer to book the hotel and arrange the meal
- 3.Show all of our machines and inspect for them
- 4.Make Proforma Invoice
- 5.Before Shipping we will do good service for the machine
- 6.Arrange very Professional Exporting

### FAQ

Q1. What is your terms of payment and Trade?

A: T/T 40% as deposit, and 60% before delivery, Terms Trade have CIF FOB.

Q2. How about your delivery time?

A: Normally, it will take 7 days after receiving your advance payment. The specific delivery time depends on the items and the quantity of your order.

Q3. What is your after-sale service?

A: We will provide spare parts for free within 6 month after you receive the machines .

Q4. Do you check all your machines before delivery?

A: Yes, we will 100% do the machine service before delivery to make sure the machines are in good

working condition.

If you have any more questions you can add me on WhatsApp.

 **Hefei Gangniu Machinery Equipment Co., Ltd**



+86 19314055186



Flora@ahgnjx.com



usedexcavator-equipment.com

Room 707, Huifeng Plaza, North First Ring Road, Hefei City, Anhui Province